



10ZiG Management Software

10zig Thin Client Management Software

The 10ZiG Management Software provides centralized configuration, maintenance, and control of all local and remote 10ZiG thin client devices.

10ZiG Manager features:

Centralized Management

Install the management software on any Windows PC or server in minutes. Only one instance of the 10ZiG Manager Server is necessary to monitor and maintain all 10ZiG thin clients whether on the same local network or remote WAN connections. The manager service runs in the background providing automated device discovery and centralized storage of thin client settings and application configurations.

Automatic and Manual Device Discovery

Specify IP address ranges or subnets for the 10ZiG Manager to search for new devices, configure the manager to poll for device status automatically at a given interval, or initiate discovery manually with a click of the toolbar button. Configure the manager to use a combination of ICMP, TCP, and UDP network protocols to optimize device discovery across various networks.

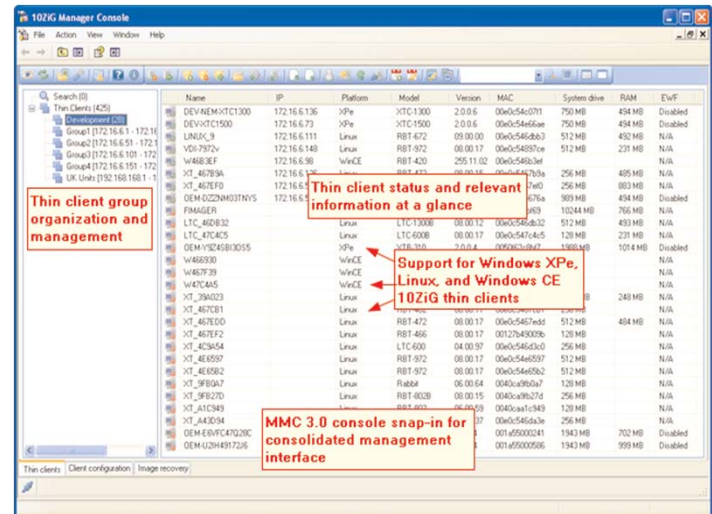
Intuitive MMC Console Interface

The simple and intuitive graphical interface utilizes Microsoft Management Console (MMC) 3.0 technology. Use the included console file or integrate the 10ZiG Manager into your favorite administrative console. Install and configure the 10ZiG Manager Console on additional Windows computers to connect to the centralized manager server if you need multiple management access points.

The primary view is an explorer-like interface containing a tree view of device groups. A list view details each 10ZiG device with status icons indicating each device's power state and information regarding network connection and various hardware specifications. Toolbar buttons and right-click context menu items allow you perform numerous management tasks such as rebooting devices, updating device firmware, updating client agent software, and retrieving and sending client configurations.

Group Organization and Management

Drag and drop functionality allows organizing thin clients into logical groups based on physical location or divisional criteria for ease of management and monitoring. Optionally, populate groups automatically based on IP address range. Perform common operations, configure settings, and configure supported applications on groups and/or individually selected clients.





Remote Reboot, Shutdown and Power-on

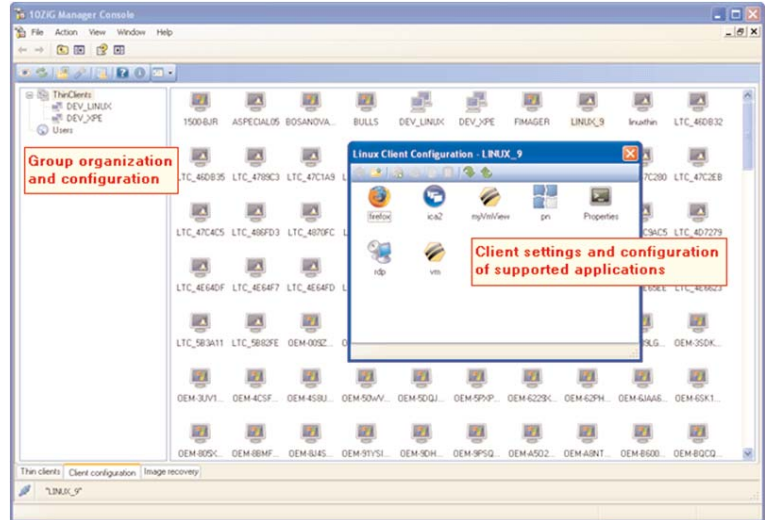
10ZiG Manager supports remote rebooting, shutting down, and powering on devices by use of Wake-On-LAN. With one simple click of the mouse it is possible to turn on and turn off a device remotely on the network, this can also be done at specific times using the Task Scheduler.

Updating Device Firmware

The 10ZiG Manager has a built-in HTTP server for publishing firmware updates. Initiate a firmware update from the console for the selected Linux or CE devices, and the thin clients will download and install the necessary updates.

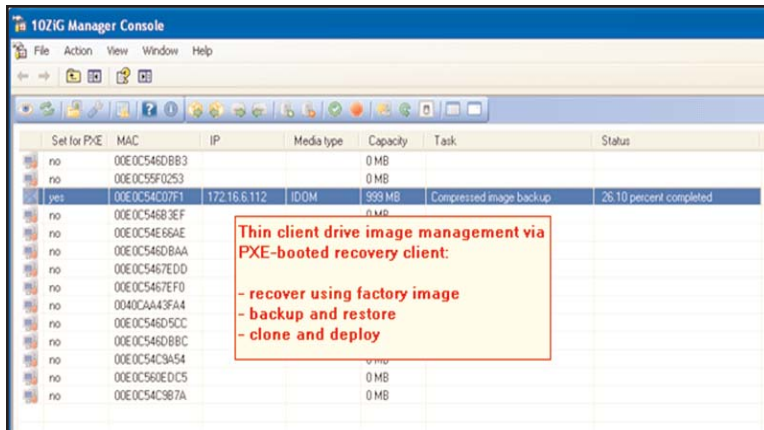
Updating Agent Software

When new XTC Agent installation packages are released for 10ZiG Windows XPe thin clients, download the new package and add it the repository. Then remotely install the update to the selected group or individually selected devices, or schedule the update for after-hours with the Task Scheduler.



Remotely Control or Shadow Devices

Simply highlight a device in the console, right click and select VNC to take control of that device. For security and resource reasons, VNC is only enabled by the manager for Linux and CE devices when connecting via the console. For privacy reasons, the user is prompted to permit the connection.



Create, Modify and Restore Thin Client Configuration

Complete definitions for each supported application can be centrally defined and pushed down to the thin client, enabling the thin client to be installed without the user configuring anything at the desktop. For example, create a new 5250 session configuration and push it out to the appropriate thin clients.

Manage Thin Client System Images

Utilizing an integrated PXE server, 10ZiG Manager allows remotely backing up and restoring a thin client's drive. This feature permits recovering a corrupted drive with a previously backed up image or a factory recovery image. As well, large deployments of XPe devices can be simplified using the "Image Cloning" feature. Configure a template thin client as desired and initiate a system image clone. The source thin client is prepared for cloning by removing unique identifier information, and a deployable image is then backed up. Deploy the cloned preconfigured image to other clients for expedient rollouts.