

Overview

BOSmanager provides centralized configuration, maintenance, and control of up to 250 local and remote thin client devices. Reduce costs and improve productivity with this SNMP based management software that comes standard on BOSaNOVA Linux and CE.Net Thin Clients.

This feature rich software gives administrators the ability to clone users environments, assist users remotely, and much more.

Centralized Management

Install BOSmanager in minutes. All BOSaNOVA thin clients are displayed in a easy to read tree view.

Intuitive Interface

The graphical interface is simple and intuitive and identifies every device with detailed icons. Red and green indicators show the power state to the devices. The tree view can be expanded or collapsed to provide details regarding which applications are present and what the settings are for each device.

Free of charge

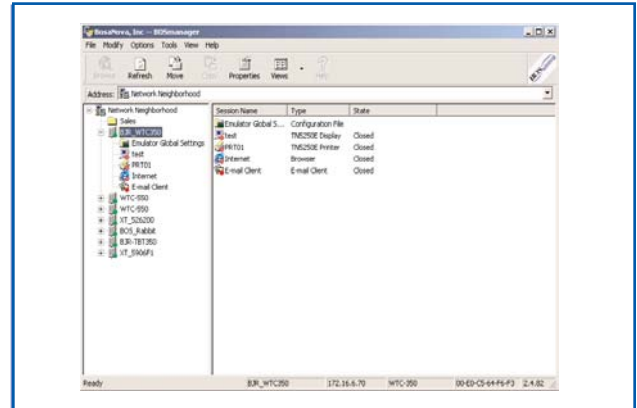
BOSmanager is included free of charge on BOSaNOVA thin clients.

Automatic Discovery

New BOSaNOVA thin clients are automatically discovered as they are connected to the network.

Group Management

Devices can be subdivided into groups based on IP ranges and subnets. This allows for easier management of large installations, where branches of the network can be expanded to provide details of specific groups only.



Maintain, configure and upgrade all of your thin clients from a central location with BOSmanager.

Create, modify and restore thin client configuration

Complete definitions for each of the available applications can be centrally defined and pushed down to the thin client from the BOSmanager, enabling the thin client to be installed without the user configuring anything at the desktop.

Remote Shadowing of the video

Simply highlight a device in the manager and right click to either view or take control of that device. For security and resource reasons the shadowing agent (VNC) on the device is only enabled by the manager at the time when the shadowing is requested. For privacy reasons a request is sent to the user to permit the use of this tool.

Updating of firmware

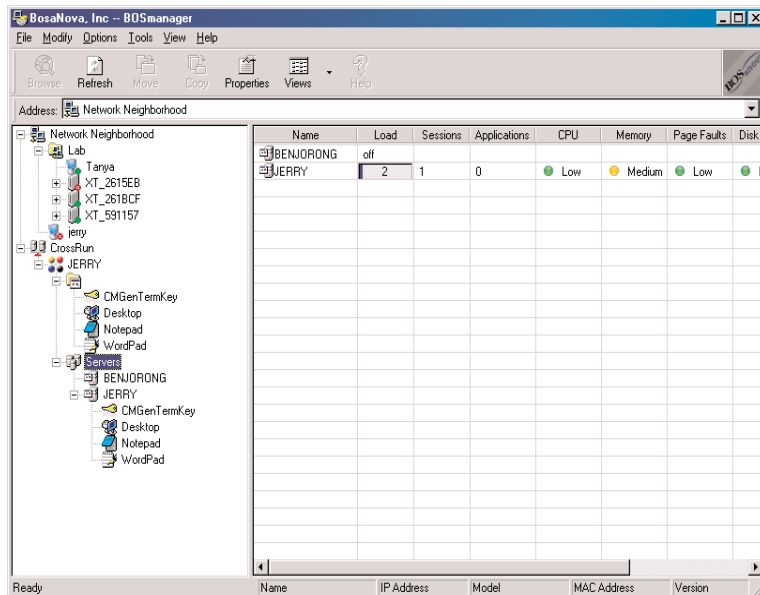
The BOSmanager has a built in HTTP and FTP server. This enables both push and pull of firmware updates to and from the thin client.

Power options

BOSmanager supports the power on and remote power down for BOSaNOVA thin clients by use of Wake On LAN. With a simple one click of the mouse it is possible to turn on and turn off a device remotely on the network.

Main Features

- Research and broadcast via IP address range
- Supports Wake on LAN
- HTTP Server Integrated
- FTP client integrated
- Central updating of Firmware
- Remote control or viewing of devices
- Graphical display using groups of devices
- Create, restore and update device configurations
- Display and shadow thin clients from a central point
- Remote device monitor
- Group Management
- Scalable



BOSmanager allows the management of both thin client and PC's. Servers can also be monitored and applications published using the BOSmanager.



BOSaNOVA thin clients allow users to reduce costs, increase security and improve productivity.

Requirements

- Operating System - Windows 98, XP, Windows 2000, Windows 2003
- Memory RAM - 10MB
- Fixed Disk Space - 15MB
- TCP/IP

BOSaNOVA Enterprise Edition

The BOSaNOVA Enterprise Edition is available for managing more than 250 thin client devices.

The Enterprise Edition offers a number of additional features including the ability to perform operations on multiple devices, scheduler operations, manage terminal server content using CrossRun, export/import license files, and more.

Download BOSmanager or a 30-day trial of BOSmanager Enterprise Edition by visiting us online at www.bosanova.net