

The RBT-802 Thin Client

Faster, Smaller, Cooler

Overview

The RBT Series delivers on the promise of increased performance and low cost in a compact package. Assembled in the USA, the RBT Series weighs less than 1lb allowing you flexible mounting options and lower shipping costs.

The high speed AMD LX800 processor provides users with exceptional performance and low power consumption. Available with internal 802.11 b/g wireless, the RBT-802 is the smallest thin client on the market with this option.

The RBT-802 is available with a full array of features including FireFox browser, Thunderbird email client, Common Unix Printing System (CUPS) for enhanced printing capabilities, Remote Desktop Protocol (RDP) and Independent Computing Architecture (ICA).

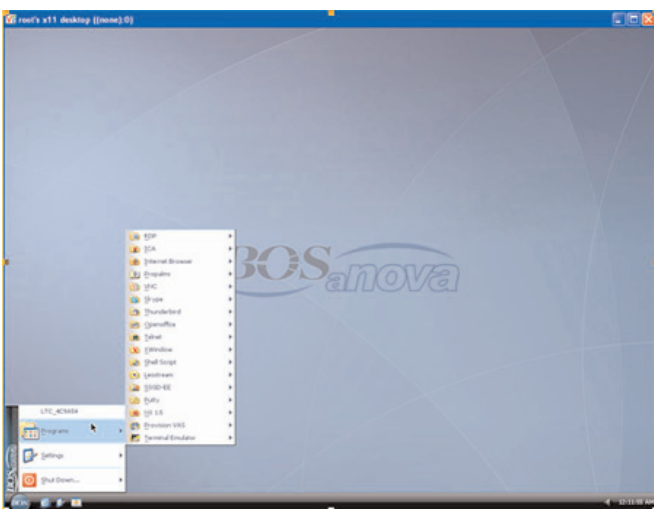
Versatile Operating Environment

The RBT-802 supports three modes of operation:

WBT Mode - Windows based Terminal mode, where the terminal behaves like a CE.NET device with full screen applications, GUI 5250/3270, Terminal Server access, Citrix or Propalms which auto start and auto-reconnect.

Desktop Mode - Windows Vista type user interface provides access to all applications in a windowing environment.

Kiosk Mode - dedicated Kiosk type of interface not configurable by the user of the terminal.



The RBT-802 offers the look and feel of Windows Vista and the versatility and speed of Linux.



Benefits:

- Industry standard OS (Linux 2.6 Kernel)
- Small form factor for space-saving, desktop and mounted deployments
- Advanced emulation with 8 5250 sessions. Split Screen, Rule Cursor, macro support, multi host, GUI, SSL, 122-key keyboard support
- Internal 802.11 b/g wireless option
- Includes RDP, ICA and Propalms clients
- Firefox browser and Thunderbird email client
- Integrated with CUPS for enhanced printing capabilities
- Support of Provision Networks, XenDesktop, and Leostream VDI clients
- File explorer feature providing visualisation and browsing of local drives



The RBT-802 Thin Client

Faster, Smaller, Cooler

Options

Part Number	7802
Standard Flash/Ram	256MB/256MB (Flash/Ram)
Standard Client Software	
ICA	Version 10
RDP	5.2
Host Access	Supports 8 TN5250e and TN3270e sessions, Telnet with SSH, SSL, Ericom, Wyse 60, Xterm R6, VT100, VT220 and VT400
Browser	Firefox
Propalms	•
CrossRun	•

Hardware Configuration

Form Factor	Compact stand-alone metal case
CPU	AMD LX 800
Audio	
Mic In/Line Out	•
Internal Speaker	•
Networking	Autosensing, 10/100 Ethernet, RJ-45, WakeOnLAN, PXE boot, Internal 802.11 b/g wireless option
I/O and Expansion	
USB Ports – Type 2.0	4
Physical Specifications	
Dimensions	5.5" W x 1.4" H x 5.1" D 140mm x 35 mm x 130 mm
Base Weight	.88 lbs., excluding external AC/DC adaptor
Environmental	
Operating Temperature	0° ~ 40°C 32° ~ 104°F
Operating Humidity	0% ~ 90%
Operating Altitude	0-20,000 ft (0-6,096 m)
Power Requirements	DC12V, 1.2A, 8W
Security	Kensington Security Lock Slot

Software Configuration

Operating System	Linux 2.6 Kernel
Security Features	Read-only file system, locked-down user account, administrative passwords
Client Software	
Citrix ICA	•
Secure Gateway	•
VNC Shadowing	•
BOSmanager	•
PDF Viewer	•
Thunderbird	•
NX Client	•
X-Windows	•
VDI Client	Provision Networks, Leostream, XenDesktop, VMWare
Language Support	US, UK English, Spanish, Italian, German, French, and 30 more including Eastern Europe
Special Features	Autostart/auto-restart connection, multiple level lock-down user

Ordering Information

PID	Description
7802	RBT-802 Thin Client, Linux, 5250, RDP, ICA, AC/DC Adapter
MS001	Optical Mouse
9001	USB to Centronics Parallel
9003	VESA Mounting Bracket
9009	Internal Mini PCI b/g wireless adapter
8009	OpenOffice Suite and Java Cache V1.1.3
8122b	122-key Driverless PC Keyboard

Management

BOSmanager Support	•
Push/Pull Updates	•
VNC	•
Software/Configuration Cloning	•



V0508