

Overview

Powered by Microsoft Windows CE.Net, the BOSaNOVA WTC-350 provides cost-effective and secure access to applications residing on an iSeries or pSeries host, and/or Microsoft Windows, Unix, or Citrix servers. The unit is small and efficiently designed; it can be used as a base for the monitor or mounted vertically using the factory-supplied stand.

The BOSaNOVA WTC-350 includes a powerful suite of connectivity clients as well as viewing support for standard office file formats such as PDF, word processing, spreadsheet, and presentation applications.

Advantages

- Lays flat under monitor for zero footprint freeing up valuable desktop space.
- Fast processor gives this entry-level Thin Client the benefit of excellent performance in an economical solution.
- Windows CE.Net operating system with embedded Internet Explorer 6.0 compact browser to access web-based applications — with window manager, web mail icon, and kiosk mode.
- Embedded GUI TN5250e/TN3270e terminal emulation display (up to four sessions) and SCS printing, as well as the following ASCII emulations: VT100, VT220, VT400, SCO, Xterm R6, and Telnet with SSH
- Supports connection to Windows Terminal Servers and Citrix servers using the Remote Desktop Protocol (RDP), Citrix Independent Computing Architecture (ICA) client software, Citrix Web Client, Tarantella and VNC Client
- Automatic 5250 session termination on power-down, preventing “session in use” problems normally associated with Ethernet terminals
- Supports windowing (in desktop mode), USB printing, and dial-up connection
- Contains full array of embedded applications such as Word, Excel and PowerPoint viewers; POP-3 e-mail; media player; and a PDF viewer
- GUI setup and centralized configuration, management, and security via the SNMP based BOSmanager utility for low TCO (Total Cost of Ownership)

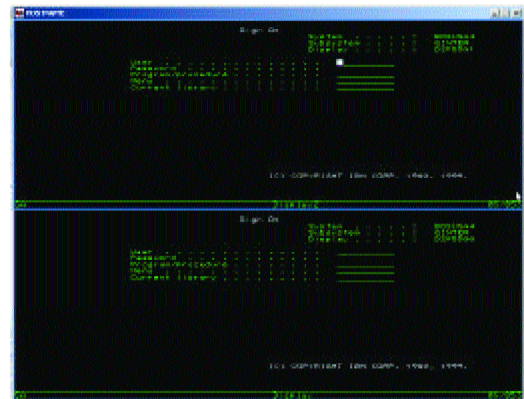


The BOSaNOVA WTC-350 is small enough to be mounted behind or placed under a monitor - creating zero footprint and freeing up valuable desktop space

Enterprise Class Remote Administration

The BOSaNOVA WTC-350 Thin Client is simple to configure either locally or remotely using the BOSaNOVA Manager, which enables the following tasks:

- Complete terminal configuration from a central location
- User lock-out from configuration changes
- Scheduling of firmware updates
- Cloning of user environments
- Control over which applications run on a particular terminal



Split-screen functionality, similar to that found in IBM 3477-type Twinax terminals, is available in both the **Text Mode** and the **Desktop Mode** of the BOSaNOVA TB350

Options

Part Number	7220
Standard Flash/Ram	32MB/64MB (Flash/Ram)
Standard Client Software	
ICA	Version 9
Web Interface	Web Client (NFuse)
RDP	5.2 or equivalent
Host Access	Supports 8 TN5250e and TN370e sessions, Telnet with SSH, Wyse 60, VT100 and VT200, x-Term, and Optional SCO
Browser	IE6 CE Version
Tarantella Client	•
Video	4X AGP, 1280x1024 dpi, 32 bit color
Maximum Video Resolution and Refresh Rate	
@ 8-Bit Color	Up to 1280x1024 @ 75 Hz Up to 1024x768 @ 85 Hz
@16-Bit Color	Up to 1280x1024 @ 75 Hz Up to 1024x768 @ 85 Hz
@24-Bit Color	Up to 1280x1024 @ 75 Hz Up to 1024x768 @ 85 Hz

Software Configuration

Operating System	CE.Net
Security Features	Read-only file system, locked-down user account, administrative passwords
Client Software	
Citrix ICA	•
PN Agent	•
Secure Gateway	•
VNC Shadowing	•
BOSmanager	•
ThinPrint	•
Special Features	Autostart/auto-restart connection, multiple level lock-down user interface

Management

BOSmanager Support	•
Push/Pull Updates	•
Anywhere for Remote Configuration	•
Software/Configuration Cloning	•



Hardware Configuration

Form Factor	Compact stand-alone steel case
CPU	SiS 550 x86 with MMX
Audio	
Mic In/Line Out	•
Internal Speaker	•
Networking	Autosensing, 10/100 Ethernet, RJ-45, WakeOnLAN, PXE boot, external wireless option
I/O and Expansion	
Serial Port – D-Sub 9-Pin Male Connector	1
Parallel Port – D-Sub 25-Pin Female Conn.	1
USB Ports – Type	2
PS/2 Ports	1 Keyboard/1 Mouse
Physical Specifications	
Dimensions	1.4" W x 9.5" H x 8.2" D 3.6 cm x 24.1 cm x 20.8 cm
Shipping Weight	5.9 lbs.
Environmental	
Operating Temperature	32-104° F (0-40° C)
Operating Humidity	20-90% non-condensing
Operating Altitude	0-20,000 ft (0-6,096 m)
Power Requirements	100-240 VAC, 50-60 Hz Max AC Input Power: 15 W
Safety Certifications	UL, UL1950, FCC Class B, cUL, CSA-C22.2, No. 950-M89, CE Mark; EMC/LVD, TUV-GS

Ordering Information

PID	Description
7220	BOSaNOVA WTC-350 5250/3270, CE.Net, IE 6, RDP, ICA, Office Viewers, PDF Reader, POP3
8122x	122-key 5250/PC Keyboard, Driverless (x = 'B' for Black or 'W' for White)
8104x	104-Key PC Keyboard (x = 'B' for Black, 'W' for White)

Authorized Distributor: