

### **Setting up Connections**

-070 support the following communication protocols (connections):

**ICA** Connections (Independent Computer Architecture) by Citrix

**RDP** Connections (Remote Desktop Protocol) by Microsoft

If running in **WBT mode**, configuring the various sessions (connections) takes place through the main The "Terminal Connection Manager" window appears each time the terminal is turned on, if there are no sessions set to auto start. If a session is currently running you will need to use the key combination of CTRL+ALT+END to enable the Terminal connection manager.

If running in **Desktop mode** you will need to go to Start, Settings, Connection Manager.

From this window it is possible to configure, modify, add, cancel and enable sessions.



2012 West Lone Cactus Dr.  
Phoenix, Arizona 85027

Phone: 866-864-5250  
Fax: 623-516-8697  
E-mail: support@bosanova.net

#### **BOSaNOVA LTD (Europe)**

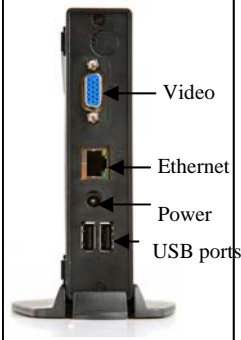
Phone: +44 1509 276252  
Fax: +44 1509 276253  
Email:  
sales@bosanova.co.uk

# **RBT-070**

## Quick Start Guide



Connecting the -070



### Hot Keys



CTRL+ALT+END= Enables terminal connection manager

CTRL+ALT+↑= Jumps back to the previous session

CTRL+ALT+↓= Jumps to the subsequent session

F2 = Enters Terminal Setup from the Terminal connection manager screen

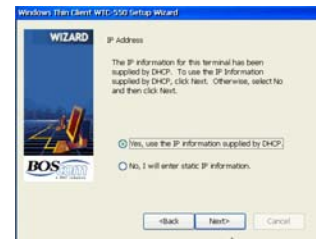
### Rabbit Initial Configuration

1. When the -070 is turned on for the first time the “Windows Thin Client -070 Setup Wizard” will appear. Here you will be able to perform the initial set up of this thin client. From here just hit next.

2. Next the Licensing agreement comes up. From here click on accept.

3. This window will allow you to specify if you would like to use a DHCP address or not. Once you make your choice click on next. **If you choose to use a DHCP address please skip to step 6.**

4. On this screen you will assign a static IP address to your thin client. Here you will enter IP address, Subnet Mask, and Gateway. After you enter this information click on Next.



5. This screen will be used to enter your DNS and WINS parameters if used.



6. On this screen you will be able to enter the Desktop area and the Refresh Frequency of your Monitor. Also you can enter the color depth here. **Please note that you will have to click on the TEST button if you make any changes to these parameters before you can continue.**

On this screen you will also be able to choose between either WBT mode or Desktop Mode. WBT Mode or Windows Based Terminal Mode is the more traditional interface for thin clients, which displays a connection manager.

Desktop Mode is the mode most users will be familiar with, but it uses more resources than WBT mode. It will have a task bar with a start button and ability to switch between applications by selecting them on the taskbar.



7. This is the last window that appears once all of the Initial Configuration procedures have been completed for the -070

To see the parameters that were entered, click **Back** to return to the previous window. To finish the Configuration, click **Finish**.

