

BASIC OPERATION GUIDE

BOSaNOVA 360 CE Wireless Digital Tablet

INTRODUCTION

Thank you for acquiring the latest addition to BOSaNOVA's line of tablet devices - the **360 CE**. Featuring a slim yet robust magnesium alloy enclosure, the sub-2lb **360 CE** with 8.4" TFT display is powered by the AMD Geode™ LX 800 processor, offering optimal combinations of performance and power savings. An external battery expansion option provides approximately 3-4 hours of additional battery operation for up to six hours of mobile usage.



The **360 CE** has a Windows CE Embedded operating system featuring a web browser, client/server computing software, media player, accessories, and applications support.

Package Contents

- **360 CE** (Battery Pack built-in) with Stylus and Bumpers
- AC-DC Power Adapter with Power Cord
- Basic Operation Guide (CD or Printed)
- Major options, depending on configuration:

Charging Cradle with DC-in Power Jack and Ethernet/USB Ports	External Battery Charger Kit
Desktop Stand	Handstrap
External Battery Pack	Carrying Pouch



Button Functions with Windows CE Operating System

Button	Description	Action
1	Power Button	Push/release typically enters Standby mode, or Push/release exits Standby mode or restarts device (software dependent). Push and hold (over 4 seconds) invokes hardware shutdown.
2	First in group of four	Programmable, Launch soft (on-screen) keyboard (Default)
3	Second in group of four	Launch Internet Browser
4	Third in group of four	Programmable, Launch RDP (Default)
5	Fourth in group of four	Programmable, Desktop (Default)
6	Left edge of button	Programmable
7	Right edge of button	Programmable
8	Upper edge of button	Programmable, Brightness Increased (Default)
9	Lower edge of button	Programmable, Brightness Decreased (Default)

Precautions

- Always exercise care when operating and handling the **360 CE**.
- Do NOT apply excessive pressure to the display screen.
- We recommend using the Stylus provided to keep the screen clean.
- Avoid prolonged exposure of the display panel to direct sunlight or other heat source. Whenever possible, the **360 CE** should face away from direct light to reduce glare.
- If the AC-DC power adapter is used to recharge or power the device, do NOT use any AC-DC adapter other than the one provided with the device or acquired from the manufacturer or its partners.
- In the unlikely event that smoke, abnormal noise, or strange odor is present, immediately power the **360 CE** off and disconnect all power sources. Report the problem to your device provider immediately.
- Never attempt to disassemble the **360 CE**, as this will void the warranty.

THE 360 CE

Basic Features

The **360 CE** wireless tablet integrates a bright and responsive touch display, a USB port, a PCMCIA slot, and embedded networking elements such as wireless LAN and Bluetooth. The primary device is complemented by a suite of accessories, including battery expansion, docking cradles, and carrying cases, for a comprehensive user experience.

A **360 CE** typically integrates an 802.11b/g or 802.11a/b/g wireless LAN (WLAN) adapter that may connect to other wireless devices or access points. If your **360 CE** does not come with such a network adapter, please consult your device provider to establish the desired network connectivity.

OPERATION

Internal Battery Switch - IMPORTANT!

To prevent battery drain during shipping and extended storage, the internal battery may be turned off. To turn on the internal battery, push the battery button switch (on the back panel) to the “up” position (see page 2 for photo/location). The internal battery pack has to be turned on for it to operate, be charged, and for the optional external battery pack to function.

Powering ON and OFF

To activate the **360 CE**, push and quickly release the Power Button to the left of the front bezel. The display will come on in a few seconds. To put the **360 CE** in Standby mode, push and quickly release the Power Button. To turn the **360 CE** off for extended storage, power off the device safely using any software function that “shuts down computer” provided in the software operating system.

NOTE: The battery packs shipped with your device may be low in power - please use the AC-DC adapter with the **360 CE** when setting up the device for the first time to fully charge the internal battery pack. You may charge the external battery pack with it attached to the **360 CE**, or with the optional external battery charger kit.

NOTE: When the battery pack(s) is (are) charging, the blue-colored Battery LED should blink slowly. If plugging in the AC-DC adapter does not trigger this blinking activity and the LED stays dark, the battery pack(s) may have been substantially drained. Try unplugging/replugging the AC-DC adapter to the **360 CE** a few times to activate the charging process.

NOTE: To conserve power, use (push and quick release) the Power Button to put the device in “Standby” mode while not in use. Pushing briefly on the same button will wake up the system within seconds.

NOTE: Avoid using the Power Button (“hold 4+ seconds” feature) to turn off the device--this form of hardware shutdown is intended to be a means of recovery from device lockups, and not as normal operation.

Start Up

If the power up (from Standby or otherwise) is successful, the appropriate interface will be displayed after a launch sequence of several seconds. The wireless LAN connection may take 10-15 seconds to be established.

Configuring the 360 CE

The device may be configured using the utilities and methods dictated by the software operating system. The **360 CE** should be configurable for various properties such as user profiles, network features, and several system elements.

Changes to the **360 CE** must be saved using the Save Settings option in the control panel or when the unit is rebooted they will be lost.

Access the User Control Panel by selecting Start -> Settings -> Control Panel -> Save Settings and check to Save Current Settings.

Calibration

The touch display for the **360 CE** is calibrated before shipping. In the event that the calibration has been modified or is unsatisfactory, the respective calibration routines (e.g., PenMount (PM) for Windows CE) to calibrate the touch interface may be used. Such applications are typically executed through touch input via Stylus or through mouse click via a USB mouse.

Wireless Networking

Wireless LAN

The **360 CE** is delivered with an embedded (user-inaccessible) 802.11a/b/g WLAN adapter equipped with a hidden custom antenna. This embedded interface is supplemented by a user-accessible PCMCIA slot for use with third-party network adapters or peripherals.

Through the support of typical WLAN adapters, the **360 CE** should be able to detect all 802.11 access points in the vicinity for you to select the access point of your choice for connection.

To connect to a network that does not have security enabled, double click on the desired network connection and the tablet will connect. To connect to a network that has security enabled, double click on the network or click on the network and select connect to configure the connection.

The SSID and WEP (if enabled) parameters on the **360 CE** and the access points have to match. The SSID is case-sensitive and it is recommended that you enable WEP encryption (or advanced alternatives) for secure access.

When WEP is enabled, you may need to consult your network administrator or your networking equipment literature to properly configure associated settings such as Authentication mode, etc. Refer to the access point operating manuals for setting up the 802.11 access points.

Bluetooth

The **360 CE** features a built-in Bluetooth adapter that operates on the Microsoft Windows Bluetooth protocol. The Bluetooth configuration application is invoked from the Windows CE Embedded Control Panel. Follow the instructions and options provided within the application to configure and invoke Bluetooth connectivity with the corresponding peripherals.

NOTE: Bluetooth devices or accessories that are not compatible with the Microsoft Windows Bluetooth protocol may not work with the **360 CE**.

Button Management

When supported by software, many of the hard buttons on the **360 CE** are programmable to perform a function of the user's choice. To activate the button re-assignment application, invoke the Button Settings ICON, in the Windows CE Embedded Control Panel.

Brightness Control

Where supported by device firmware and software, a hard button (Button 8) may be engaged to manipulate the display brightness. Press the Button 9 to lower the brightness of the screen. When selecting Brightness from the control panel, the system screen will display a Brightness control section with a slide bar to increase or decrease brightness that can be activated with the stylus.

Battery and Power Management

The **360 CE** is equipped with an internal Li-Ion battery pack that is capable of supporting approximately 1.5-2 hours of continuous operation. The period of continuous operation can be extended by approximately 3-4 hours with the external battery pack that clips (hot-pluggable) onto the back of the device. The period between battery recharges can be significantly lengthened by putting the device into Standby mode through the Power Button (see Buttons Function Table) whenever the device is not in use. Based on the CE Operating System the **360 CE** may be configured to enter various power-saving modes via the Power Button or through timed entry.

Optional Desktop Cradle

The **360 CE** is complemented by an optional Desktop Cradle for support, pass-through charging, and connection to a range of USB peripherals, including keyboard and mouse. The Cradle offers the following interfaces: a DC-in port for the AC-DC adapter, an Ethernet port, and USB ports. Always seat the **360 CE** securely onto the cradle. The cradle must be powered by the AC-DC adapter for the Ethernet and USB ports to function. The battery packs on the **360 CE** may be recharged by connecting the AC-DC adapter directly to the DC-in port on the **360 CE** or through the DC-in port on the Desktop Cradle while the **360 CE** is docked to the Cradle.

USING THE 360 CE

Memory Configuration

The **360 CE** is available in various memory configurations. The standard RAM/Storage capacity is 256MB/64MB (RAM/Storage).

NOTE: Users may supplement their embedded flash memory space with USB-based peripherals such as USB flash disks, USB disk drives, etc.

Peripherals Support

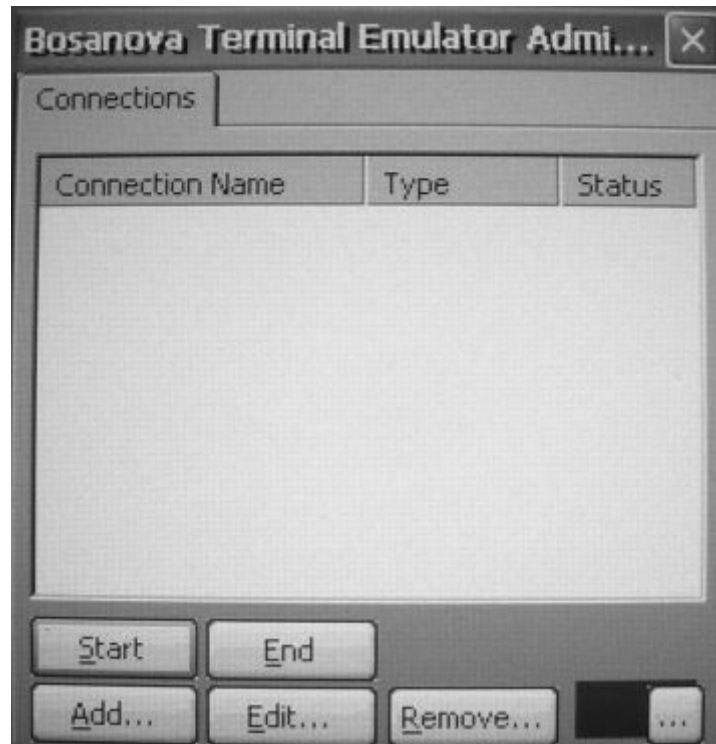
Through its USB port and PCMCIA slot, the **360 CE** supports a wide range of peripherals. These peripherals are applicable for software installation, applications storage, data storage, and system software recovery and updates. The **360 CE** is also compatible with custom mountable cradle options. These securable and mountable cradle options provide an interface to VESA mounts and arms, and to ports that may include USB, Ethernet and pass-through power.

Remote Management

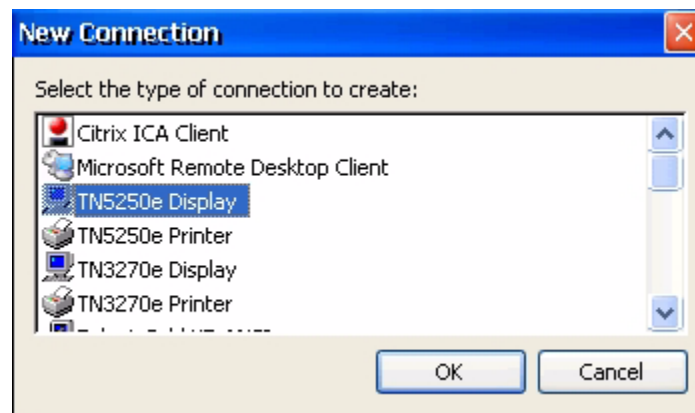
The **360 CE** can be centrally managed for emulation sessions by using BOSmanager.

Configuring Emulation

On the desktop you will find a folder called Administrator. Open the folder or double click on it to start the configuration.



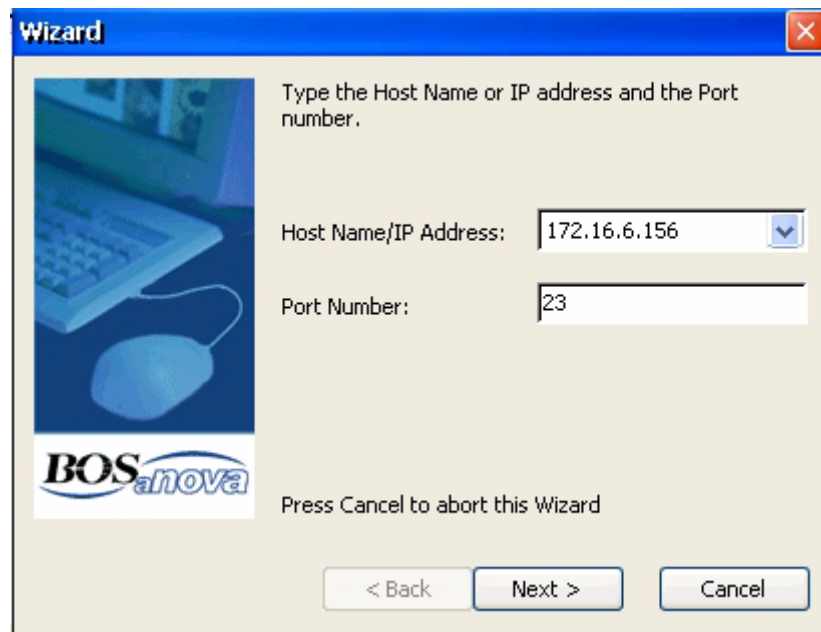
Select Add and then scroll down to select TN5250e Display



NOTE: Please be aware that the screen shots for emulation below may not match exactly with the CE.NET tablet.

There are several options for the connection type in the list - for the 5250 display session select TN5250e Display.

Enter the Host Name or IP address of the AS/400. Port Number is the default port for telnet. If this is changed, the AS/400 must be configured to accept connections on the non-standard telnet port.



Wizard

Type the Host Name or IP address and the Port number.

Host Name/IP Address: 172.16.6.156

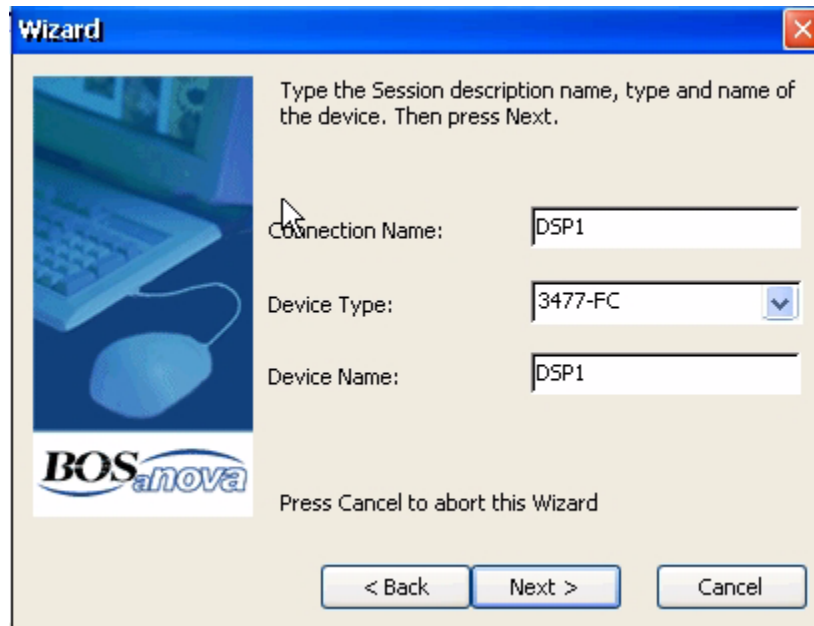
Port Number: 23

BOSanova

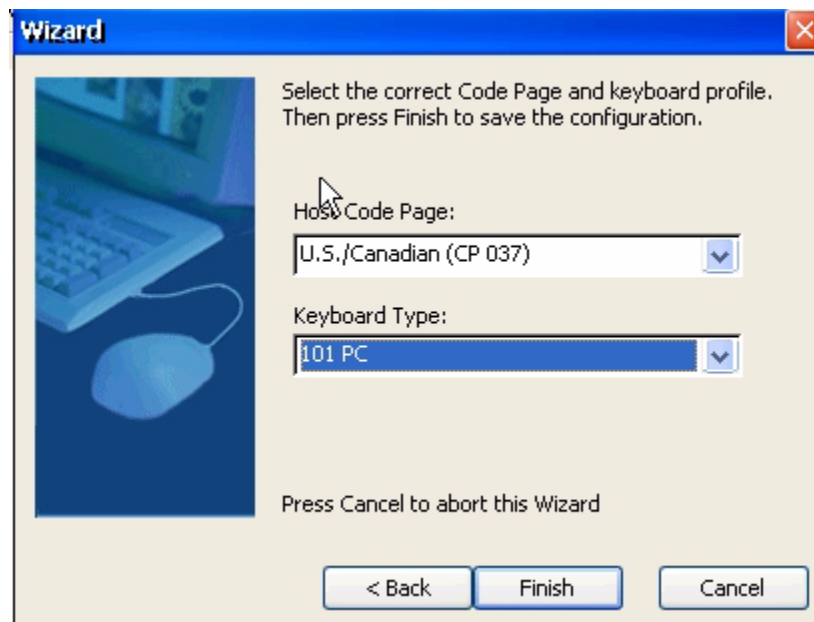
Press Cancel to abort this Wizard

< Back Next > Cancel

The connection name is the name of the session on the thin client and the device name is the name of the device description on the AS/400



The wizard will auto detect the attached keyboard. If a BOS 122 keyboard is attached, it will default to 122 keys BOSaNOVA. If a standard 101/102 keyboard is attached it will default to 101 Terminal (right control = enter). For the enter key to be enter using a 101/102 keyboard, select 101 PC.



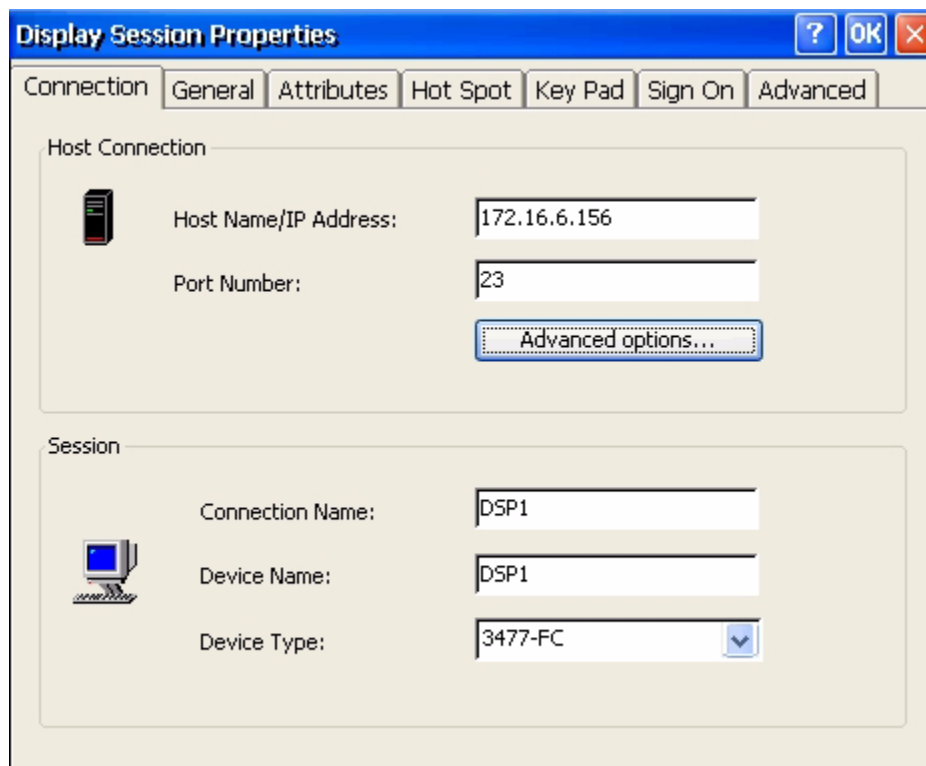
The connection will appear in the connection manager, as an ICON on the desktop with the title Emulator.

To modify the connection, highlight the connection name and select edit.

To change startup options select the connection and select startup at the bottom of the Display Session Properties

Display Session Properties - Connection Tab

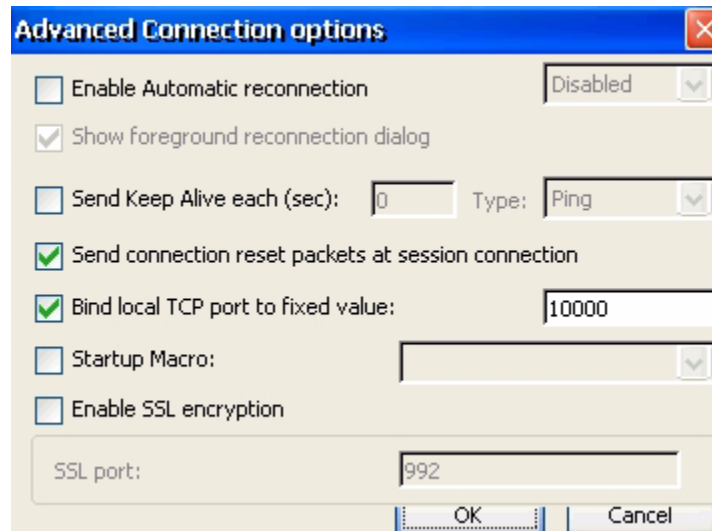
Connection tab allows for changes to the host name/IP address and the port number. Also allows for session changes such as connection name, device name and device type. For advanced options, select Advanced options....



The screenshot shows the 'Display Session Properties' dialog box with the 'Connection' tab selected. The dialog has a title bar with a question mark, 'OK', and 'X' buttons. Below the title bar are tabs for 'Connection', 'General', 'Attributes', 'Hot Spot', 'Key Pad', 'Sign On', and 'Advanced'. The 'Connection' tab is active and contains two main sections: 'Host Connection' and 'Session'. The 'Host Connection' section includes a mobile phone icon, a text field for 'Host Name/IP Address' containing '172.16.6.156', a text field for 'Port Number' containing '23', and a button labeled 'Advanced options...'. The 'Session' section includes a computer monitor icon, a text field for 'Connection Name' containing 'DSP1', a text field for 'Device Name' containing 'DSP1', and a dropdown menu for 'Device Type' currently showing '3477-FC'.

Enable Automatic reconnection - when enabled and the network connection is lost the unit attempts to reconnect the session - this works best when the connection between the unit and the host is local and does not go through a router.

Enabling Keep Alive each (sec) causes the unit to send a ping periodically to the AS/400 thus keeping the connection alive even when the unit is idle. Depending on the router type you may need to change the type to Telnet NOP.



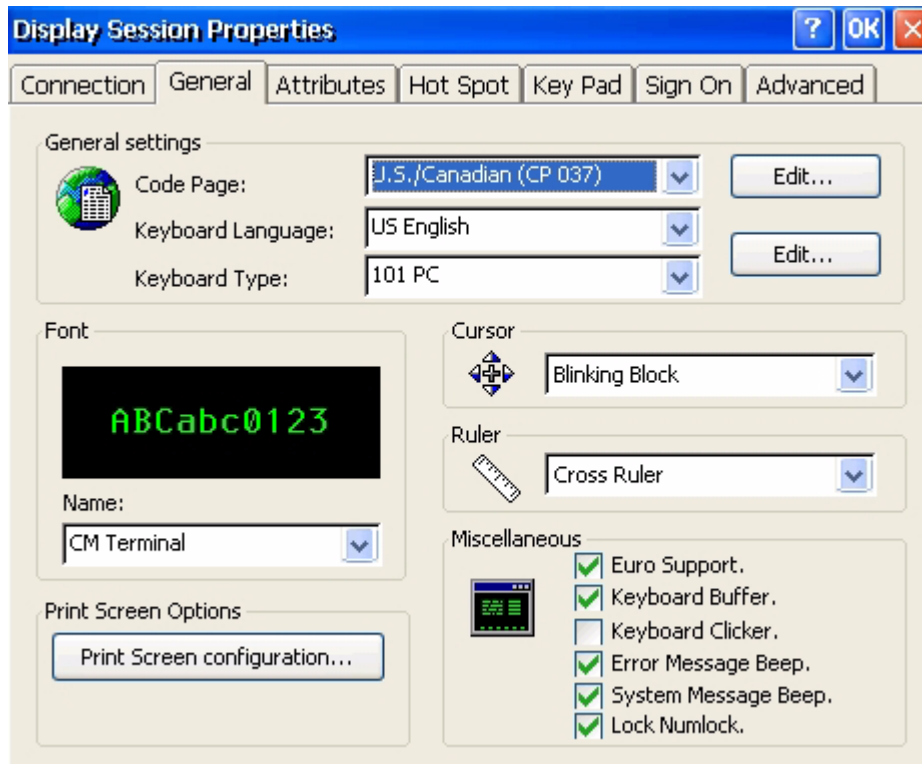
Note: Currently the iSeries only supports Telnet NOP.

Bind local TCP port to fixed value is the port the telnet session communicates back to the unit. All 5250 session will by default communicate to the AS/400 on port 23.

Startup Macro: Do no check unless directed to do so by technical support.

Display Session Properties - General Tab

Allows for changes to Code Page, Keyboard Language, Keyboard Type, Cursor options, Ruler options, Print Screen Configuration and other Miscellaneous options.



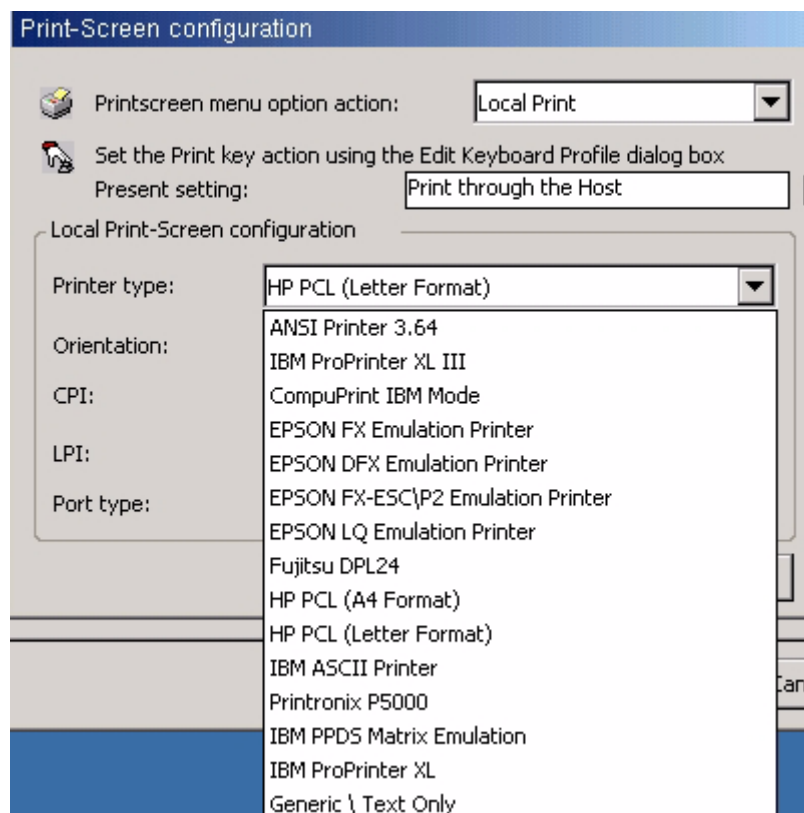
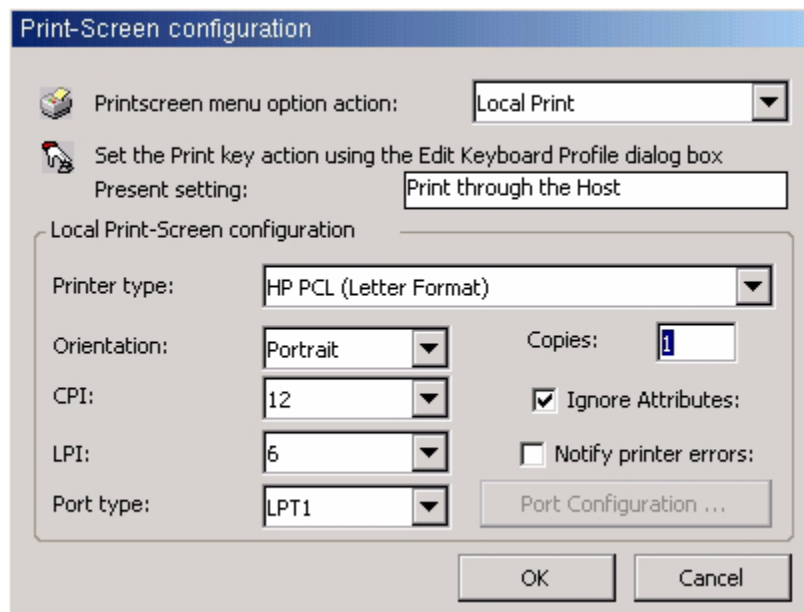
Font options are CM Terminal or Courier New

Cursor options are Blinking Block, Blinking Line, Non-Blinking Block, or Non-Blinking Underline.

Ruler options are Cross Ruler, Horizontal Ruler or Vertical Ruler.

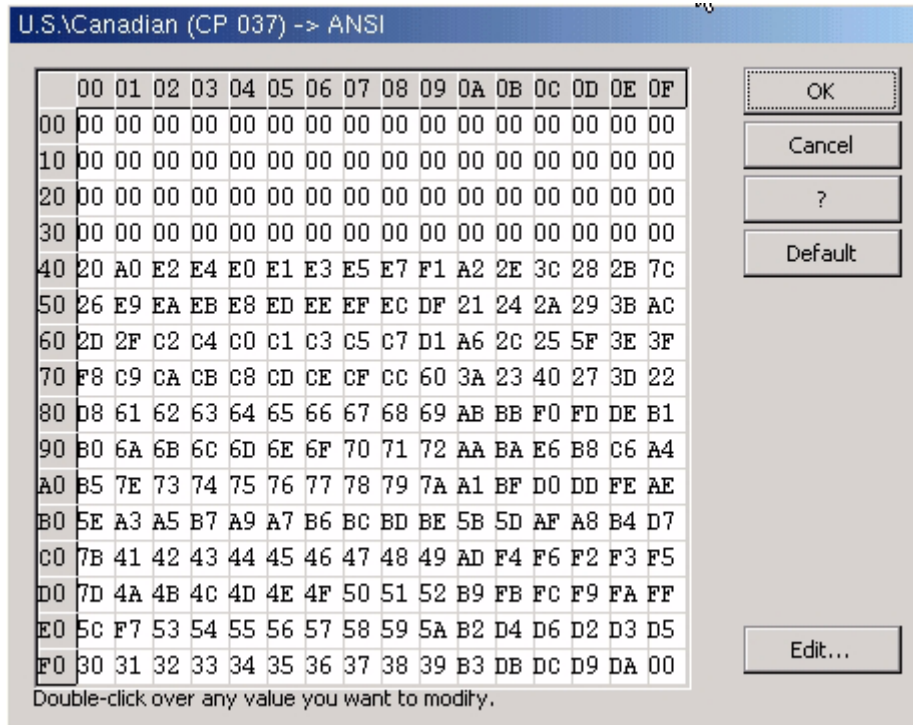
Miscellaneous options can be turned on and off by checking or unchecking associated boxes.

Printscreen menu option action determines if the print screen key can be set to Local Print, Print through the Host or Function Disabled.



Printer type is limited to built in drivers, select the closest match. If in doubt, try Generic/Text Only or use Host Print Transform.

To edit the code page select edit to the right of Code Page.



Code page is the traditional IBM term used for a specific character encoding table: a mapping in which a sequence of bits, usually a single octet representing integer values 0 through 255, is associated with a specific character.

5250/3270 communication is encoded using EBCDIC. The code page is a lookup table which converts EBCDIC to ASCII to display and/or print the data.

For printer sessions, sometimes the AS400 applications will send special EBCDIC characters to control the printer. (ie - specifically for barcodes). In this case it may be necessary to modify the transcode table to select the proper ASCII code required by the printer.

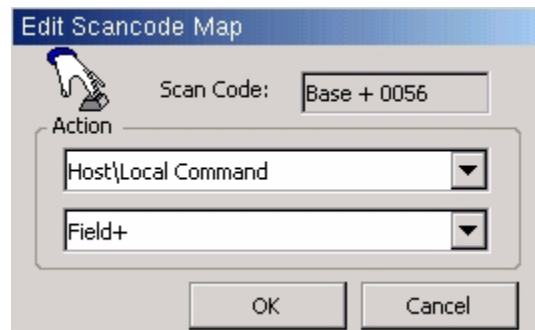
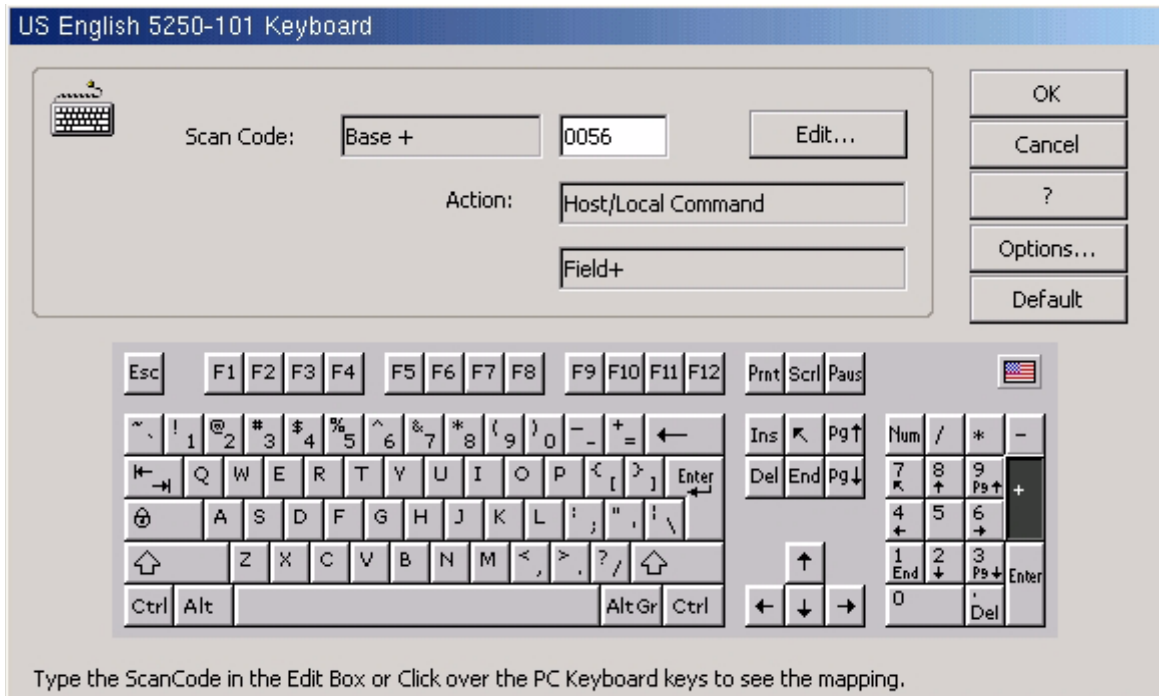
For instance an application may send an EBCDIC 'B0' as the start barcode command. By default this is mapped to an ASCII 0x5e - '^'. Sometimes the barcode printer will require an ASCII 0x24 - '\$'. In this case you can edit the transcode table entry for EBCDIC 'B0' and change it from 0x5e to 0x24.

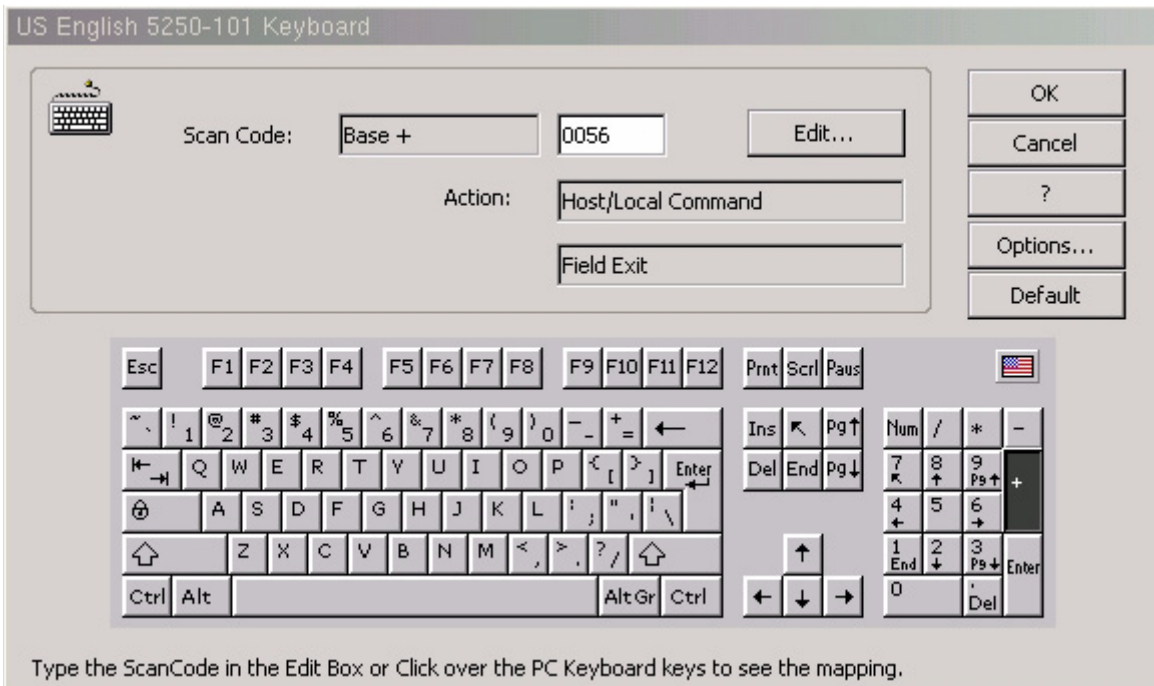
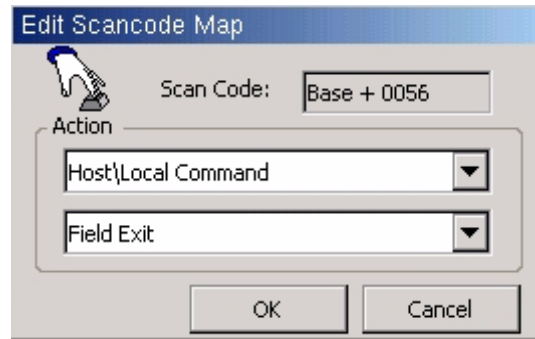
When editing the transcode table the vertical rows are the MSB of the EBCDIC code, while the horizontal cols are the LSB of the EBCDIC code. So for EBCDIC 0xB0, go to the B0 row and the 00 column.

Remapping the Keyboard

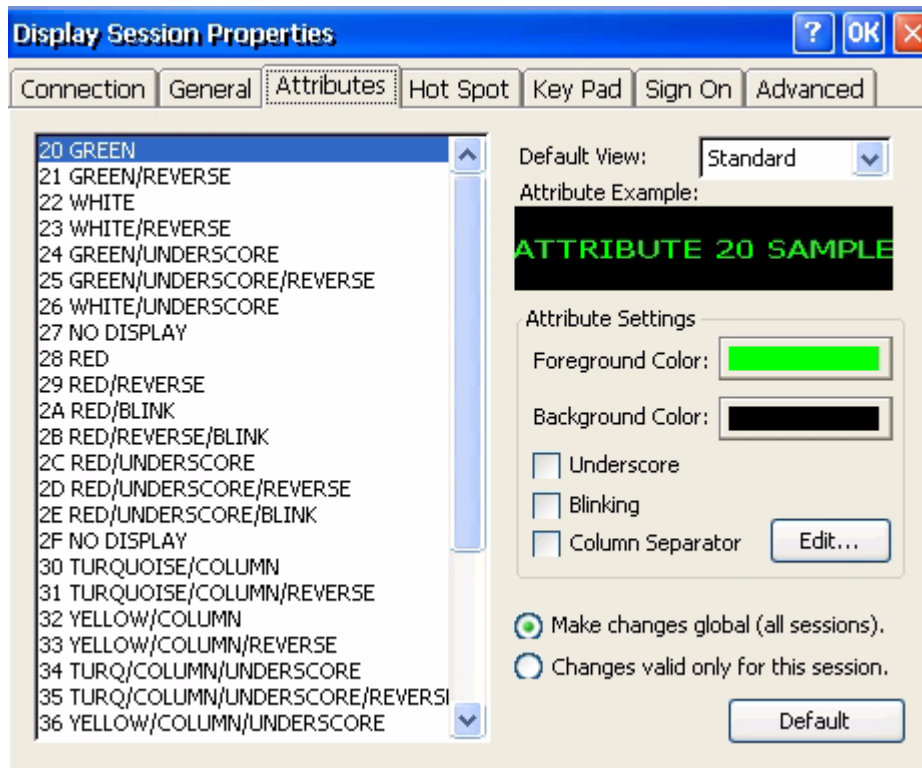
Select Edit to the right of the keyboard type to edit the keyboard.

To modify a key, select the key with the mouse. Action will change accordingly. Select Edit and then change the action to the desired command.

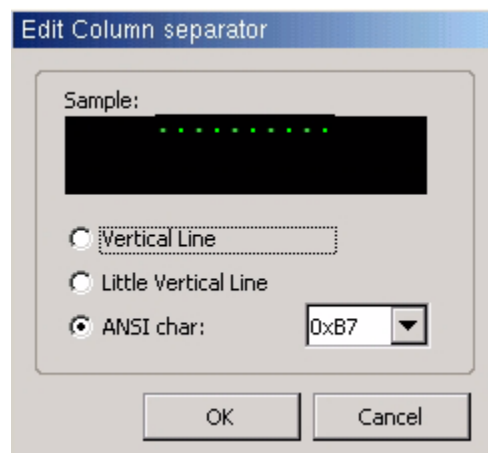




Display Session Properties - Attributes Tab

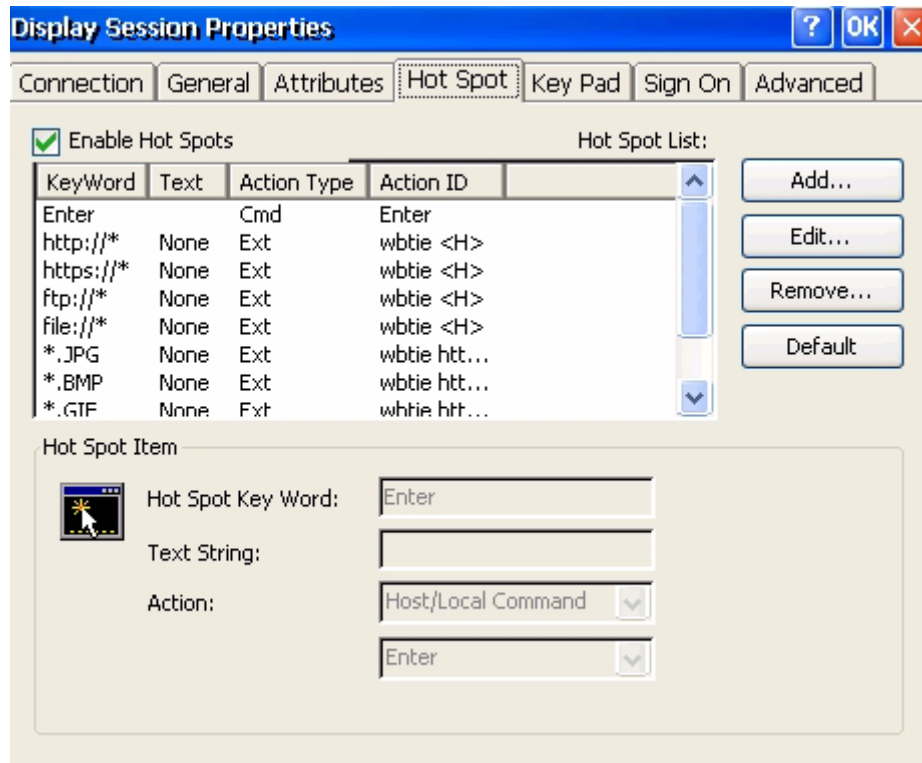


To change the column separator character select the Edit option to the right of the Column Separator.



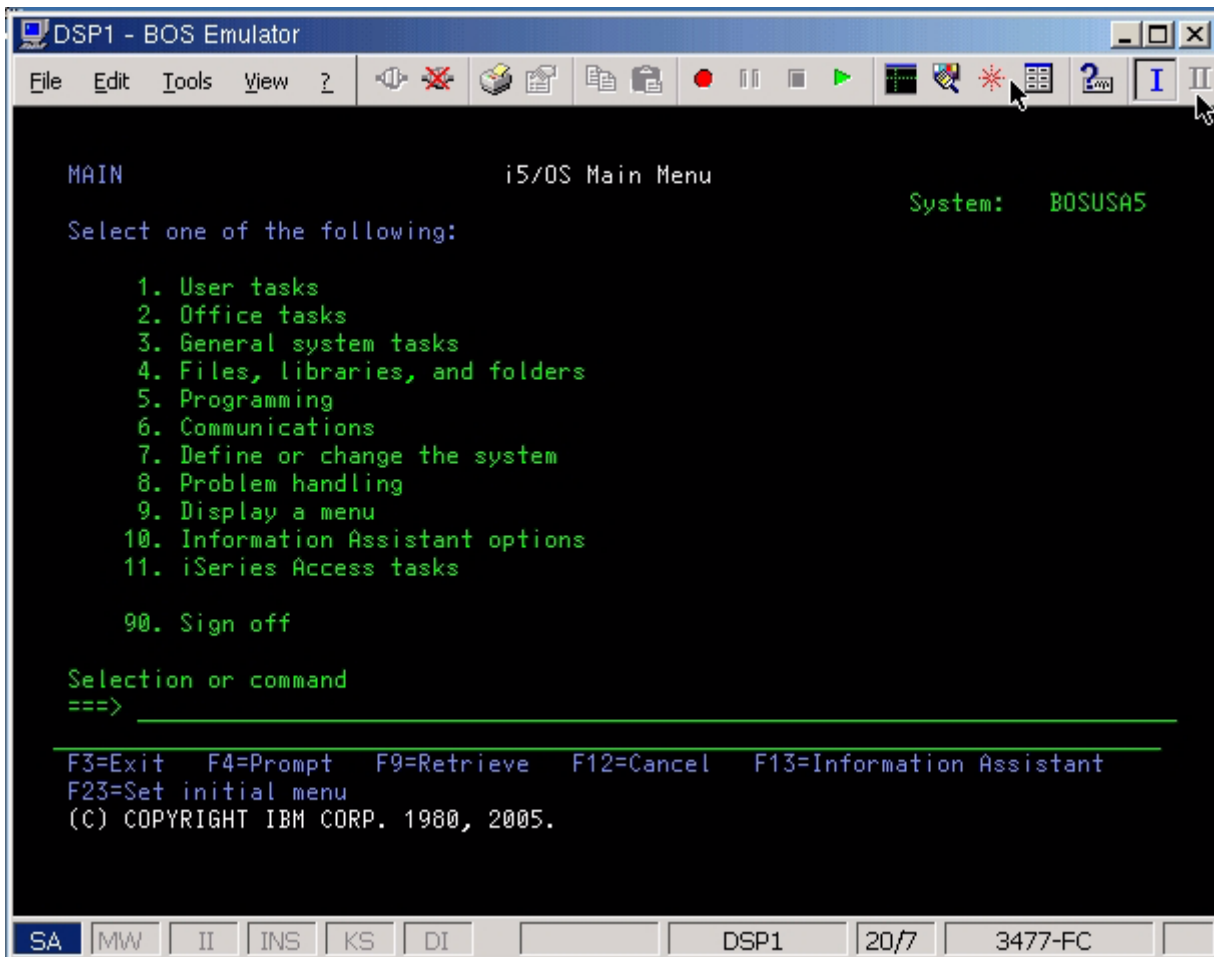
Display Session Properties - Hot Spot Tab

This option allows you to Add, Edit or Remove Hot spots.



Example of hot spot designed to run a macro that signs the user off of the host:

Record a macro by selecting the red circular ICON. Type the commands for the macro and save it. For this example a macro is recorded that types signoff and selects enter. Macro name is saved as signoff.

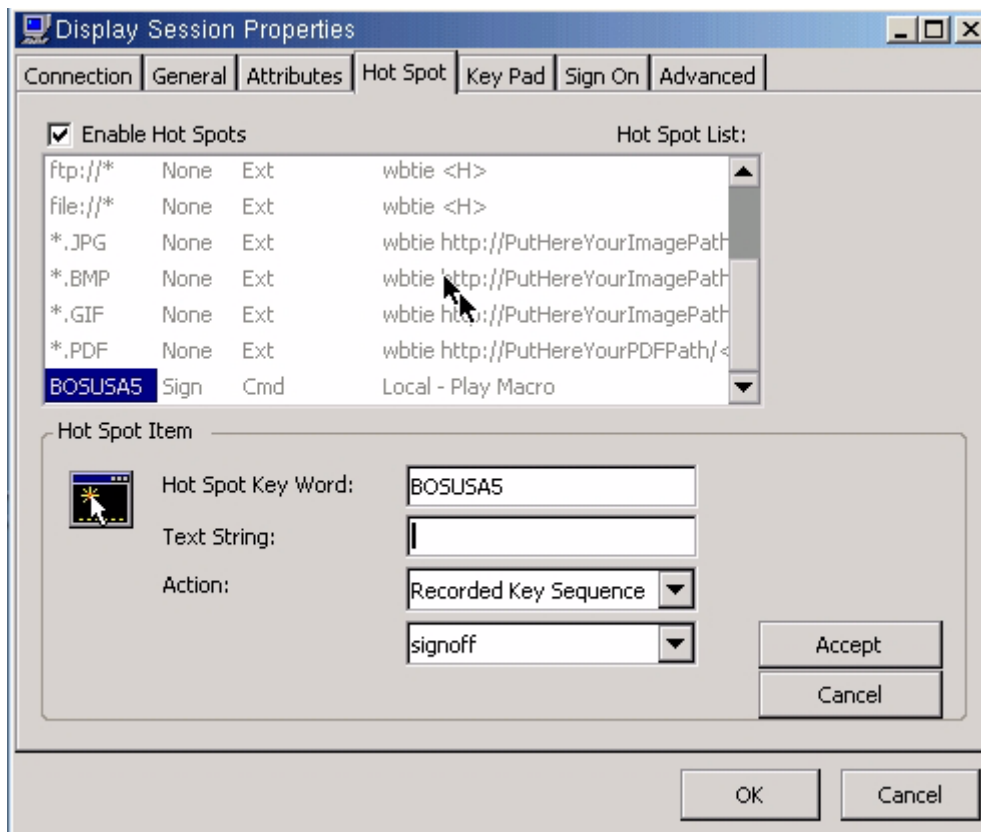


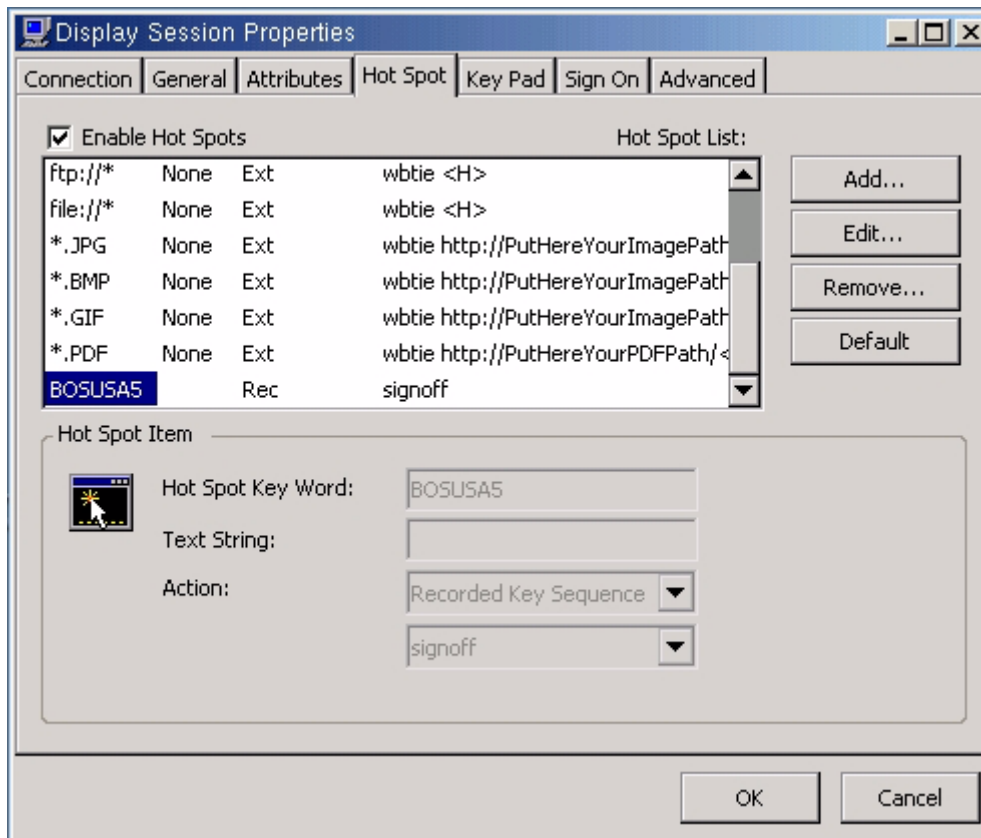
Hot Spot Key Word is BOSUSA5 - the system name that is displayed in the upper right corner of the display.

Text String is left blank.

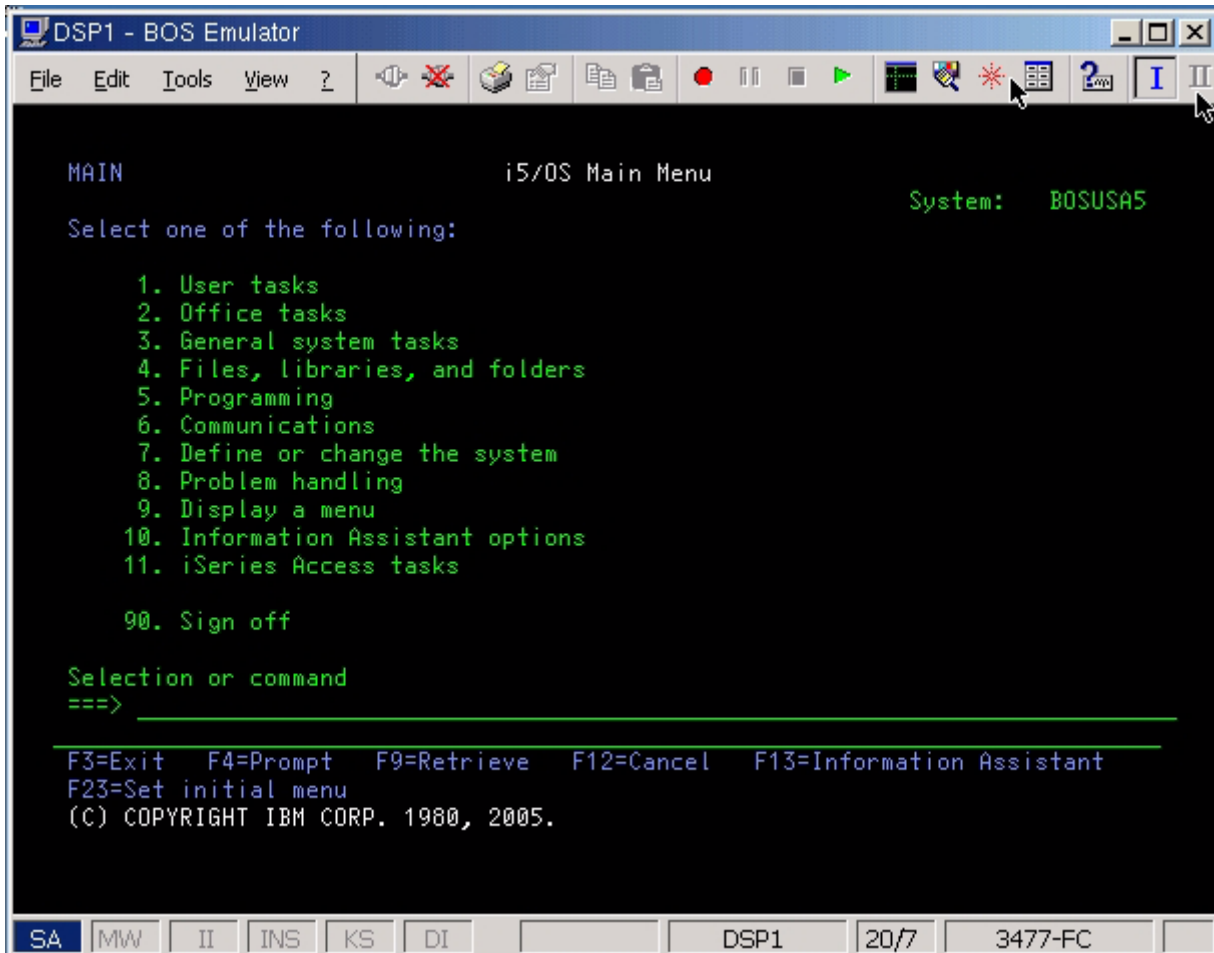
Selected Action is Recorded Key Sequence.

Action is the name of the created Macro



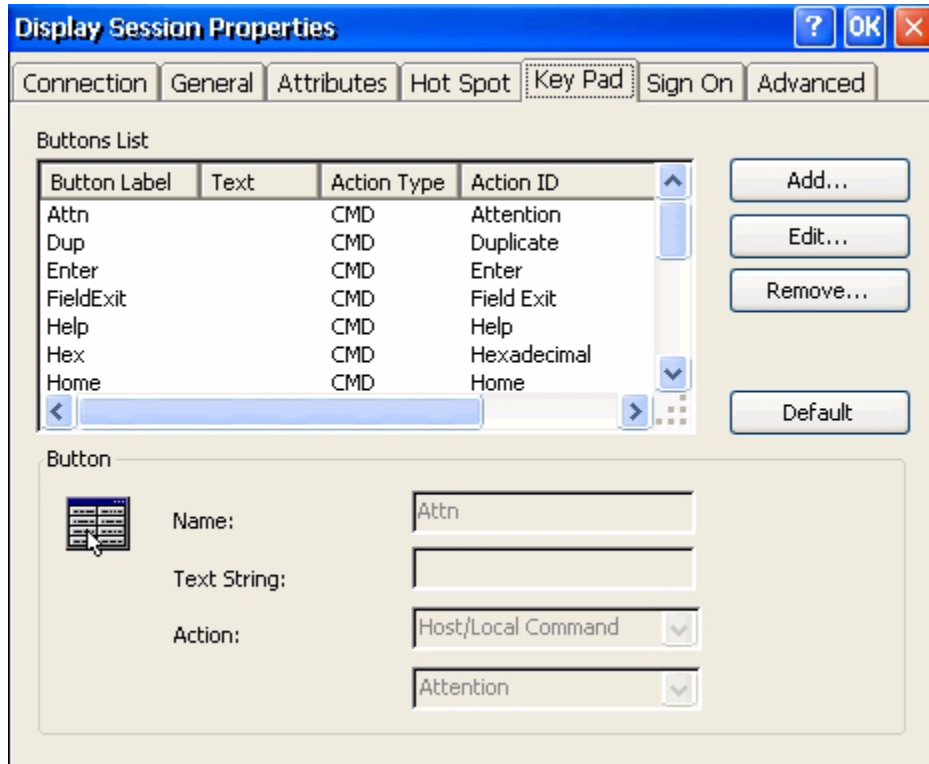


When signed on to the host, double click on BOSUSAS5 in the upper right hand of the screen and the macro named signoff will run.

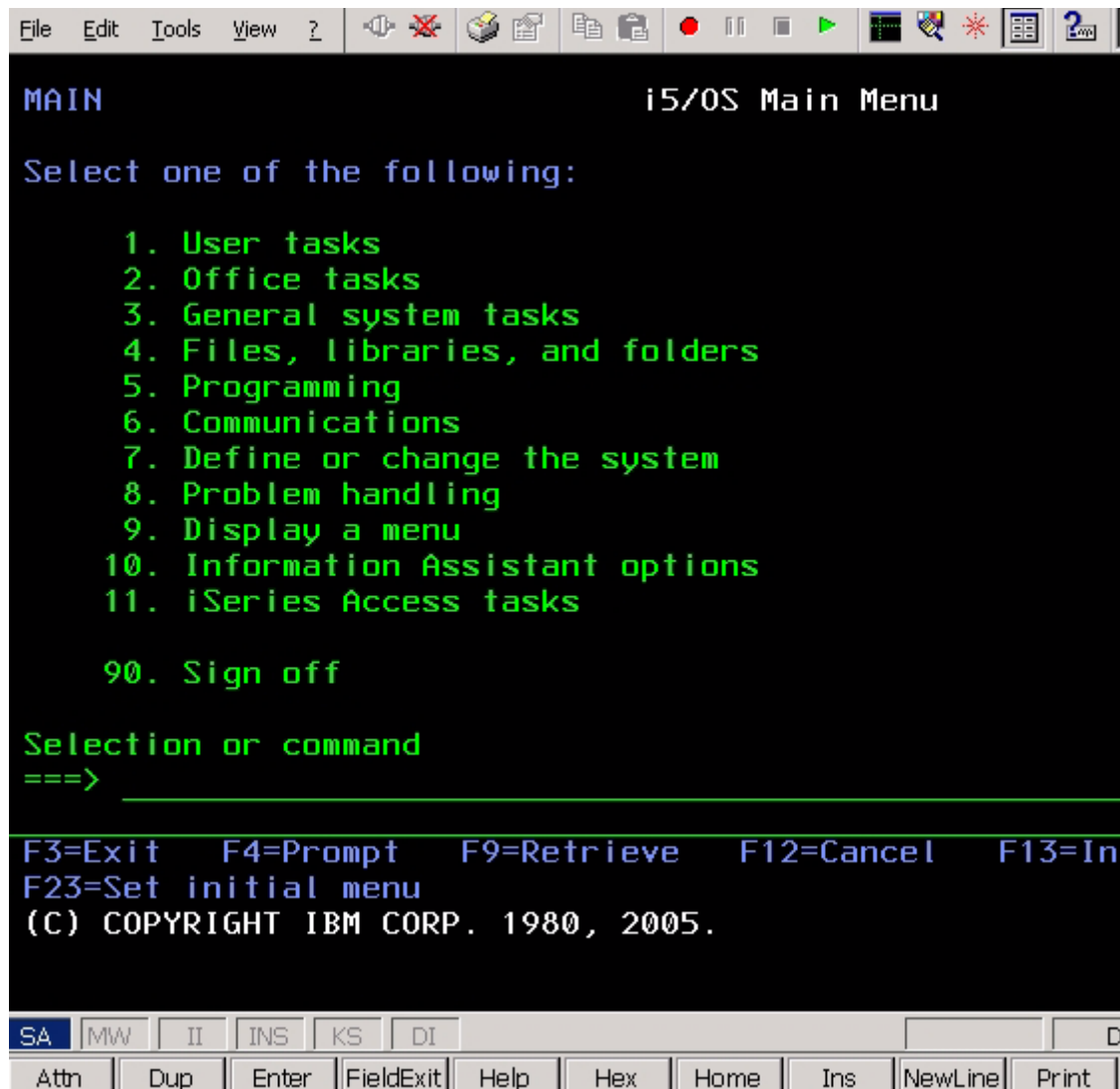


Display Session Properties - Keypad Tab

This option allows to change the options on the keypad that can be displayed in a 5250 session. You can Add, Edit or Remove commands on the keypad buttons.



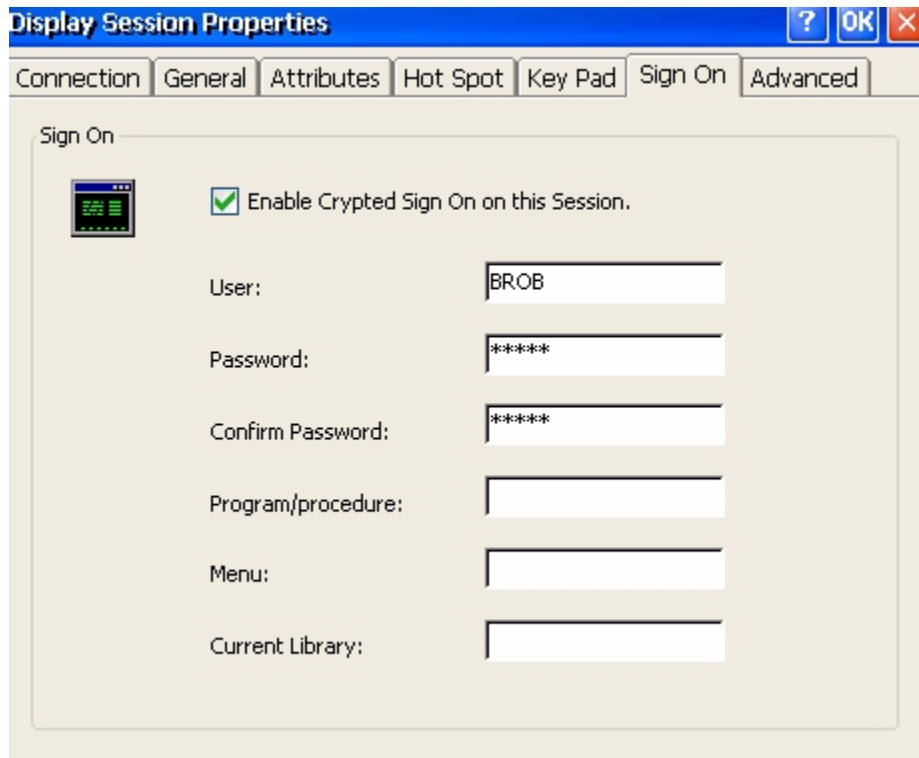
Display Keyboard Pad displays at the bottom of the 5250 screen.



Display Session Properties - Sign On Tab

To bypass the signon screen and signon automatically, complete the screen below with the proper credentials.

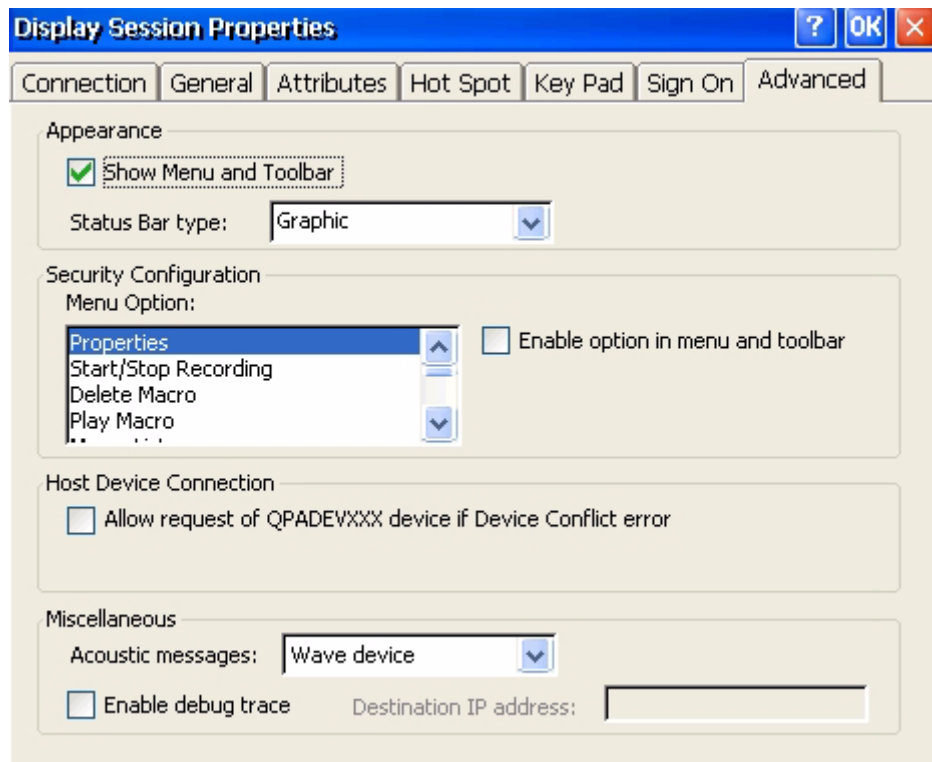
NOTE: The system value QRMTSIGN on the iSeries must be set to *VERIFY for this to work.



The screenshot shows a Windows-style dialog box titled "Display Session Properties". The "Sign On" tab is selected. The dialog contains a "Sign On" section with a small terminal icon and a checked checkbox labeled "Enable Crypted Sign On on this Session.". Below this are several input fields: "User:" with the text "BROB", "Password:" with "*****", "Confirm Password:" with "*****", "Program/procedure:", "Menu:", and "Current Library:", all of which are currently empty.

Field	Value
Enable Crypted Sign On on this Session.	<input checked="" type="checkbox"/>
User:	BROB
Password:	*****
Confirm Password:	*****
Program/procedure:	
Menu:	
Current Library:	

Display Session Properties - Advanced Tab



Appearance - option allows to show menu and toolbar or hide it. Use the drop down Status Bar type: to change the status bar.

For a 5250 session that looks more like a terminal session, uncheck “Show Menu and Toolbar” and select “Classic” as the Status Bar type.

Security Configuration - option allows to enable or disable specific functions on the toolbar.

Host Device Connection - check to allow the use of a default host name if there is a device conflict error.

Miscellaneous - do not change any of these options unless instructed to do so by a BOSaNOVA technical support engineer.

SPECIFICATIONS

Display	8.4" Hi-Brite TFT LCD with resistive touch and outdoor-viewable option
Display Resolution	800 x 600 (SVGA)
Processor	AMD Goede™ LX 800
Memory (flash)	64MB
Memory (RAM)	256MB
Software Operating Systems	Windows CE.NET
Storage	Internal flash module; USB HDD
Stylus	Non-electronic tip
Protective Bumpers	Two rubber bumpers with optional adjustable hand strap, adds drop protection
Network Interface	PCMCIA; USB: Integrated Wireless 802.11; Bluetooth build-in
Input and Control Buttons	Four (4) front buttons; One (1) oval 4-way; One Power (left edge); One "Trigger" (right edge); Internal battery control switch
Input/Output Ports	12V DC-in Jack; Microphone-In; Headset jack; USB 2.0 port
Enclosure	Magnesium-Aluminum alloy
AC/DC adapter	Input: 100-240VAC, 1.2A; Output: 12VDC, 3.5A
Power Cords	North America, EU, UK
Battery Packs (Lithium-Ion)	Internal (14W); Optional external (28W, 0.5lb), and optional tethered pouch (72W, 1lb)
Desktop Cradle (Optional)	Pass-through for power; Ethernet, USB 2.0 ports
Desktop Stand (Optional)	Aluminum parking stand
Dimensions (H x W x D)	7.9 x 9.6 x 0.8 (in); 200 x 240 x 18 (mm)
Base Weight	1.9 lbs (0.86 kg)
Regulatory	FCC Class B, CE, UL, RoHS compliant

Operating Temperature	0° - 40° C
Humidity	0% - 90% non-condensing



BOSaNOVA, Inc.

2012 W Lone Cactus Dr
Phoenix, AZ 85027
Phone 866-864-5250 • Fax 623-516-8697
support@bosanova.net
sales@bosanova.net
www.bosanova.net

BOSaNOVA UK Ltd

14 Loughborough Road
Quorn, Loughborough
United Kingdom
LE12 8DX
Phone 44 1509 276252 • Fax 44 1509 276253
support@bosanova.co.uk
sales@bosanova.co.uk
www.bosanova.co.uk

February 22, 2007